

NIC *NXG*

The complete solution for NextGeneration SONET/SDH and Ethernet Testing



- Based on the Next Generation Multi-Rate (NGMR) module, the most flexible and powerful module in the industry, supporting multiple protocols and software upgradable
- The NIC *NXG* enables you to test and maintain NextGen SONET/SDH, Ethernet and DWDM Networks.
- The flexible NIC *NXG* will support exactly the capabilities you need today and can be updated with new technologies as you need them.
- The NIC *NXG* with its innovative design and flexibility are the best value in the industry.

NIC *NXG*

The NIC NXG's Powerful Test Options

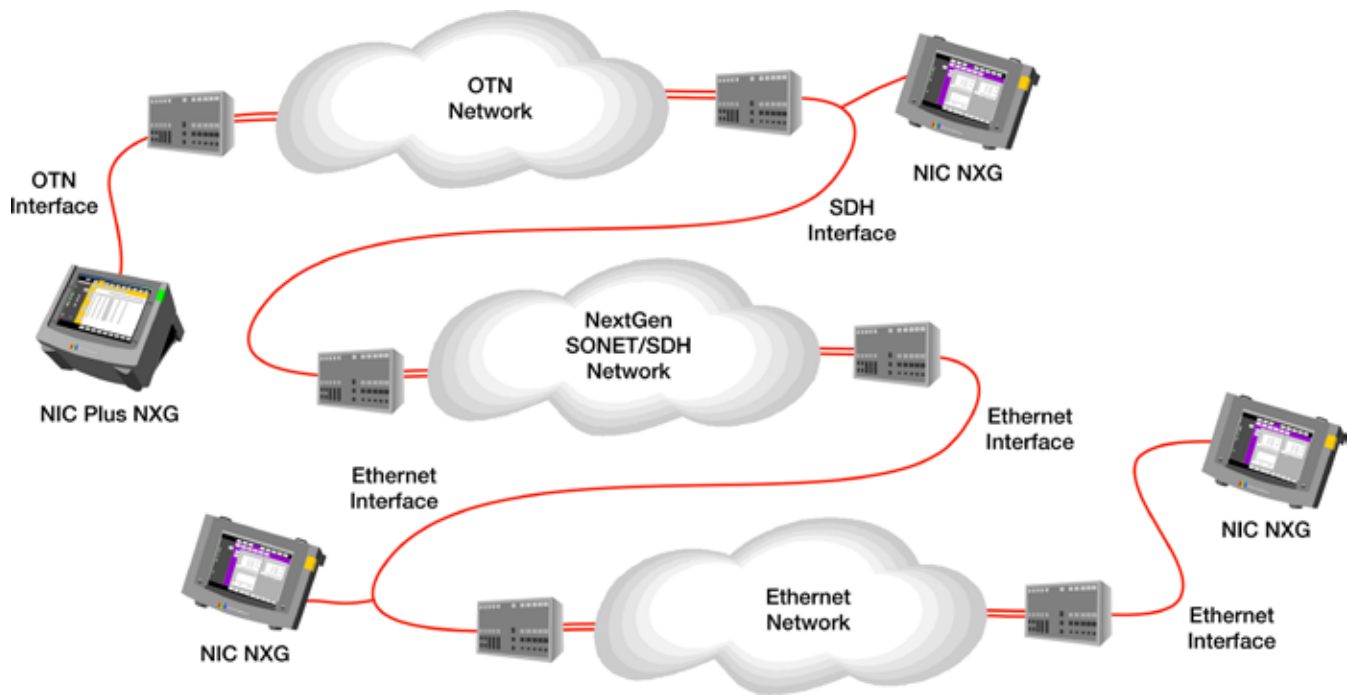
The NIC NXG is the industry's most innovative and flexible platform. Equipped with the NextGeneration Multi-Rate (NGMR) module, the NIC NXG can be adapted to your exact needs with Test Options, license-based testing capabilities that can be added to the NIC NXG at any time. Leveraging programmable logic technology, the NGMR module can be reconfigured to provide a wide range of testing capabilities.

Available Test Options

- OTU-1 (2.66G) test option
- OTU-2 (10.7G) test option
- High-Order Virtual Concatenation test option
- Low-Order Virtual Concatenation test option
- Link Capacity Adjustment Scheme test option
- Generic Framing Procedure (bulk/framed) test option
- Generic Framing Procedure-Transparent test option
- 1G Ethernet (1G) test option
- 10G Ethernet FEC (11.049/11.095G) test option
- 10G Ethernet LAN (10.3G) test option
- 10G Ethernet WAN (9.9953G) test option
- ODU-1 to ODU-2 Mapping test option
- GFP into OTN
- More to come...

The screenshot shows the NIC NXG software interface with a test results table. The table has columns for M, Chas, Seq #, Delay (ms), Fr Delay, Pe Delay, and Operation. The data rows are as follows:

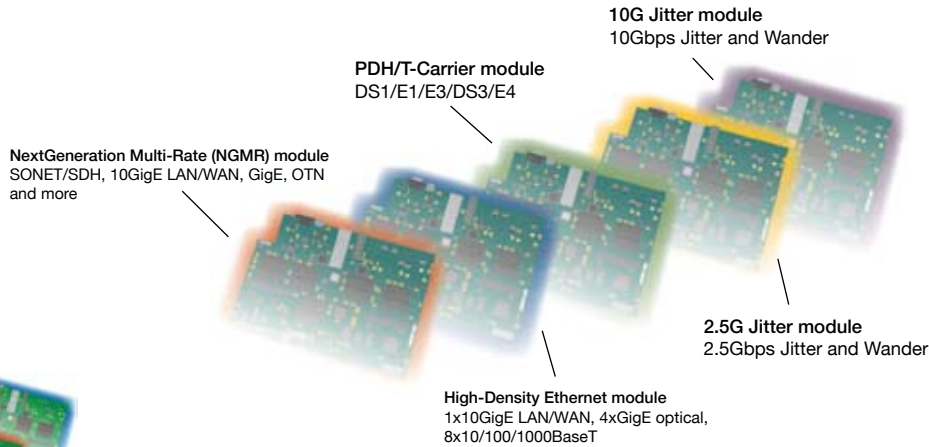
M	Chas	Seq #	Delay (ms)	Fr Delay	Pe Delay	Operation
1	3	0	0.0000	0	0	
2	23	1	0.0000	0	0	
3	27	2	0.06242	0	391	
4	30	3	0.0000	0	0	
5	34	4	0.0000	0	0	
6	36	5	0.0000	24	0	
7	41	6	0.0000	0	0	
8	44	7	0.0000	0	0	
9	45	8	95.00000	449	0	
10	48	9	0.00000	0	0	
11	51	10	0.00000	0	0	
12	52	11	255.00000	2048	0	
13	56	12	0.00000	0	0	
14	59	13	0.00000	0	0	
15	61	14	0.12484	0	782	
16	64	15	0.00000	0	0	
Add						



NIC *NXG*

The NIC NXG's Hardware Configurations

The NIC NXG and NIC Plus NXG are available in custom configurations to suit your needs for network testing now and into the future. Building upon the technology and flexibility of the NGMR module, custom configurations include Ethernet/Fibre Channel, Jitter/Wander and PDH/T-Carrier testing modules making the NIC NXG an all-in-one network testing solution.




NGMR + HDE
Light and portable solution for telecom/datacom network deployment and maintenance



NGMR + PDH
TDM testing at all rates from 1.5M to 10G, the NGMR's Test Options and optional PDH/T-Carrier Jitter and Wander



NGMR + HDE + PDH
All-in-one test solution for network deployments and maintenance with multiple/simultaneous testing




Also available in rack mount version



NGMR + 2.5/10G Jitter
Full-rate SONET/SDH jitter/wander testing solution with Test Option-based optional OTN 2.66 and 10.7



Multiple NGMR + HDE
Multi-port simultaneous testing for manufacturing and large network deployments.



Tailor a configuration to your specific needs

With the technology and flexibility of the NIC NextGen Multi-Rate (NGMR) Module, the NIC NXG and NIC Plus NXG can provide exactly the testing capabilities you need today and tomorrow.

Features

- NextGen testing (VCAT/LCAS/GFP)
- Software-based, modular portable product for NextGeneration testing—your one box solution
- SONET/SDH at 51Mbps, 155Mbps, 622Mbps, 2.5Gbps or 10Gbps
- OTN (OTU-1 and OTU-2)
- Test Options available for 1Gig Ethernet, 10Gig Ethernet LAN, WAN and FEC, ODU-1 to ODU-2 multiplexing and the NextGen VCAT, LCAS and GFP
- Custom configurations including High-Density Ethernet/Fibre Channel, Jitter/Wander and PDH/T-Carrier modules
- Three-year warranty

Benefits

- Order just the functionality you need now and upgrade with Test Options when new requirements arise
- Combine NGMR module with Ethernet, PDH and Jitter/Wander modules for an all-in-one test solution
- Investment protection
- Reduce training time with easy-to-use Graphical User Interface (GUI) and 24-hour technical support included at no additional cost
- Support field technicians from anywhere with the built-in Remote Access Manager



For more information or a sales quote, contact any Digital Lightwave location or email sales@lightwave.com



Corporate Headquarters
5775 Rio Vista Drive
Clearwater, FL 33760, USA
Toll free: +1.877.442.DIGL
T: +1.727.442.6677
F: +1.727.536.3541

International Headquarters
Jebel Ali Free Zone
P.O. Box 261126
Dubai, U.A.E.
T: +971.4.3606013
F: +971.4.3606014

Latin American Headquarters
Saratoga 214, Col. Portales
Mexico City, DF
Mexico
T: +52.55.1353.4741
F: +1.727.442.5660